



**Welcome to the 2022 SailFest Newcastle Regatta hosted by the Newcastle Cruising Yacht Club.**

**SailFest puts sailing on the national stage, with the City of Newcastle backdrop providing a spectacular racecourse. Racing offshore, we welcome the City of Newcastle's TP52 Gold Cup, as well as the Transport for NSW offshore racing & cruising fleets.**

**The event showcases sailing and water to the wider community with offshore keelboat racing, inshore off-the-beach racing at Stockton, and FREE try sailing and aquatic activities at Carrington.**

Find out more –  
<https://sailfest.com.au/>

# SAILING INSTRUCTIONS

# SAILING INSTRUCTIONS

## SAILFEST NEWCASTLE REGATTA

### 26<sup>TH</sup> & 27<sup>TH</sup> MARCH 2022

## 1 RULES

- 1.1 The event shall be governed by the rules as defined in the Racing Rules of Sailing (RRS), and the Special Regulations of Australian Sailing (AS).
- 1.2 Yachts shall comply with the current Australian Sailing Special Regulations Category 4, or NCYC's Category 7 PLUS.
- 1.3 Yachts sailing in IRC Division(s) shall comply with the current IRC Rules Parts A, B and C.
- 1.4 RRS 52 is amended to permit powered winches for boats over 14m LOA.
- 1.5 Boats not racing in IRC shall request permission from the Race Committee to use movable and/ or variable ballast for the purpose of increasing stability. Any such request must be accompanied by full details of the system involved, and any such system will be considered in establishing the yacht's handicap. Stored power may be used for the operation of moveable ballast systems. RRS 51 and 52 are modified to the extent of this paragraph.

## 2 RACE CONDITIONS

- 2.1 Newcastle Harbour is a very busy commercial port. A motor may be used by a yacht when racing to keep out of the way of commercial shipping (i.e. move out of the channel when a ship is approaching). RRS 42.3(i) allows propulsion using an engine, provided the boat does not gain significant advantage in the race.
- 2.2 All competitors will have engines running when within the Harbour and when within 500m to seaward of the entrance during departure and arrival. A boat that cannot manoeuvre safely, and is in danger of hindering any commercial shipping, shall only use her engine FOR PROPULSION to clear such shipping. This changes RRS 42. Competitors are reminded that a restricted navigation zone exists on approach to and within Newcastle Harbour (refer to Chart AUS207)
- 2.3 If when racing, a competitor receives a "5 horn blast" from commercial shipping (meaning "I am in doubt about your action taken to avoid a collision"), the offending boat may be disqualified from that race without a hearing. This changes RRS 35 and Appendix A5.
- 2.4 The following diagram illustrates the distances that vessels must keep clear of commercial shipping.





### **3 NOTICES TO COMPETITORS**

- 3.1 Notices to competitors will be posted in the Regatta Office located in the Trophy Room on the ground floor of the NCYC Clubhouse.
- 3.2 The event webpage may duplicate notices to competitors and can be found online:  
<https://sailfest.com.au/>
- 3.3 The race frequency shall be VHF Ch 77. This channel may be used by the race committee to communicate with competitors and/or broadcast general information throughout the event.
- 3.4 The Race Committee may broadcast course, bearing and distance information followed by a countdown over the VHF race frequency at any time.
- 3.5 No later than the warning signal, the race committee will signal the course number by displaying a numeral pennant from the Race Committee Vessel. An approximate compass bearing of the first leg may also be displayed on a numeral board near the transom of the start boat.

### **4 CHANGES TO SAILING INSTRUCTIONS**

- 4.1 Any change to the sailing instructions will be posted before 0830 hrs on the day it will take effect, except that any change to the schedule of races will be posted by 1830 hrs on the day before it will take effect.

### **5 SIGNALS MADE ASHORE**

- 5.1 Signals made ashore will be displayed from the event flag pole. The event flag pole will be on the Floating Shed on F-arm of the marina.
- 5.2 When flag AP is displayed ashore, '1 minute' is replaced with 'not less than 60 minutes' in the RRS Race Signals.

### **6 CLASS FLAGS**

- 6.1 Class Flags will be as follows:  
TP52 Division class flag shall be code flag Tango  
Division 1 class flag shall be code flag Echo  
Division 2 class flag shall be code flag Foxtrot

## 7 SCHEDULE OF EVENTS

The following schedule is indicative only and may be varied at any time:

7.1

Date	Time	Event	Location
Saturday, 26 <sup>th</sup> March 2022	0900 hrs	Registration / Regatta Office Opens	Clubhouse
	0930 hrs	Competitors Briefing	
	1155 hrs	First Warning Signal TP52s and Division 1 fleets – x3 windward/leeward Races	Offshore
		First Warning Signal Division 2 – passage race	Harbour Start
	After Racing	Happy hour in the Clubhouse	Clubhouse
Sunday, 27 <sup>th</sup> March 2022	1025 hrs	First Warning Signal All Divisions – Passage Race	Harbour Start
	ASAP After Racing	Happy hour in the Clubhouse	Clubhouse
		Prizegiving Ceremony	

\*The OA may make changes to this schedule at any time.

7.2 On the last scheduled day of racing, no warning signal shall be displayed after 1500 hrs.

## 8 THE START

- 8.1 Races will be started using RRS 26.
- 8.2 Entrants not starting within 4 minutes of their Division start time may be scored DNS.
- 8.3 For windward/leeward courses, the starting line will be between a staff displaying an orange flag on the race committee vessel and the course side of the starting mark.
- 8.4 For passage races, the starting line will be between a staff displaying an orange flag on the race committee vessel and the course side of the Starboard Lateral Mark No. 5 (in the vicinity of Stockton Ferry Wharf).

## 9 CHANGE OF THE NEXT LEG OF THE COURSE

- 9.1 To change the next leg of the course, the race committee will move the original mark/s (or move the finishing line).

## 10 WINDWARD/LEEWARD COURSES

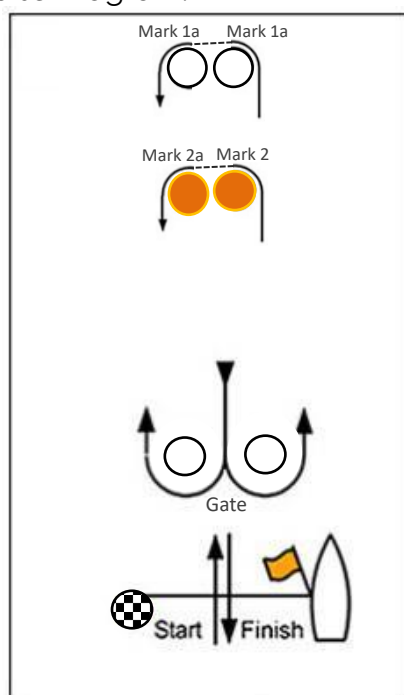
10.1 All rounding marks are to be rounded to Port.

10.2 If a gate mark is missing, the remaining mark shall be rounded to Port.

10.3 Windward / Leeward Courses are as follows:

Course Number	Division	Course
1 (W/L)	TP52	Start – 1 – 1a – Finish
	Division 1	Start – 2 – 2a – Finish
2 (W/L)	TP52	Start – 1 – 1a – Gate – 1 – 1a – Finish
	Division 1	Start – 2 – 2a – Gate – 2 – 2a – Finish
3 (W/L)	TP52	Start – 1 – 1a – Gate – 1 – 1a – Gate – 1 – 1a – Finish
	Division 1	Start – 2 – 2a – Gate – 2 – 2a – Gate – 2 – 2a – Finish

10.4 Windward/Leeward Course Diagram:



10.5 Windward/Leeward mark descriptions:

Mark	Description
Start/Finish	Black & White checkered buoy
Mark 1 & 1a	White buoys
Mark 2 & 2a	Orange buoys
Gate	White buoys

## 11 PASSAGE COURSES

### 11.1 Passage Race Course Diagram:



### 11.2 Passage mark descriptions are as follows:

Name	Position	Description
Northern Bight Mark	32°50.7'S / 151°54.7'E	White
Sygna Mark	32°53.3'S / 151°49.8'E	White
Mark A	32° 55.9 S, 151° 48.4 E	White
Mark B	32° 57.0 S, 151° 46.4 E	White
Mark D	32° 57.47 S, 151° 48.8 E	White
Glenrock Mark	32° 58.6 S, 151° 45.0 E	White

### 11.3 Passage Courses will be as follows:

Course No. 1		Distance
TP52	Harbour Start – Sygna Mark (S) – Glenrock Mark (P) – Northern Bight Mark (P) – Harbour Finish	25 NM
Div 1	Harbour Start – Sygna Mark (S) – Glenrock Mark (P) – Sygna Mark (P) – Harbour Finish	20 NM
Div 2	Harbour Start – Sygna Mark (S) – Glenrock Mark (P) – Harbour Finish	15 NM

Course No. 2		Distance
TP52	Harbour Start – Glenrock Mark (P) – Mark D (P) – Mark B (P) – Mark D (P) – Mark B (P) – Mark D (P) – Harbour Finish	24 NM
Div 1	Harbour Start – Mark B (P) – Mark D (P) – Mark B (P) – Mark D (P) – Harbour Finish	15 NM
Div 2	Harbour Start – Mark B (P) – Mark D (P) – Harbour Finish	10 NM

Course No. 3		Distance
TP52	Harbour Start – Sygna Mark (S) – Glenrock Mark (P) – Mark A (P) – Mark B (P) – Mark A (P) – Glenrock Mark (P) – Harbour Finish	26 NM
Div 1	Harbour Start – Sygna Mark (S) – Glenrock Mark (P) – Mark A (P) – Mark B (P) – Harbour Finish	20 NM
Div 2	Harbour Start – Sygna Mark (S) – Glenrock Mark (P) – Harbour Finish	15 NM



## 12 THE FINISH

- 12.1 For windward/leeward races, the finishing line will be between a staff displaying a blue flag on the race committee vessel and the course side of the finishing mark.
- 12.2 For passage races, the finishing line will be a line between Starboard Lateral Mark No. 5 (in the vicinity of Stockton Ferry Wharf) a staff displaying a blue flag on the race committee vessel (in the vicinity of Queens Wharf).

## 13 TIME LIMITS

- 13.1 *Time Limits are as follows:*

Race Description	Limit Type	Time Limit
Windward/Leeward race	Race Time Limit	90 minutes
	Finishing Window	30 minutes
Passage Race	Race Time Limit	6 hours
	Finishing Window	2 hours

- 13.2 The *Race Time Limit* is defined as the amount of time allowed for the first boat to finish the race.
- 13.3 The *Finishing Window* is defined as the amount of time a boat has to Finish after the first finisher in her division.
- 13.4 Boats still racing when her time limit expires will be scored points equal to the number of boats finishing within the time limit plus 30% of the number of starters rounded to the nearest whole number, but no more points than the number of starters. Such boats will be scored Time Limit Expired (TLE). This changes RRS 35, A4.2 and A5.

## 14 SCORING

- 14.1 The Scoring System will be the Low Points System, RRS Appendix A5.2.
- 14.2 The minimum number of races to constitute a series shall be 1.
- 14.3 No drops will apply. This changes RRS Appendix A.

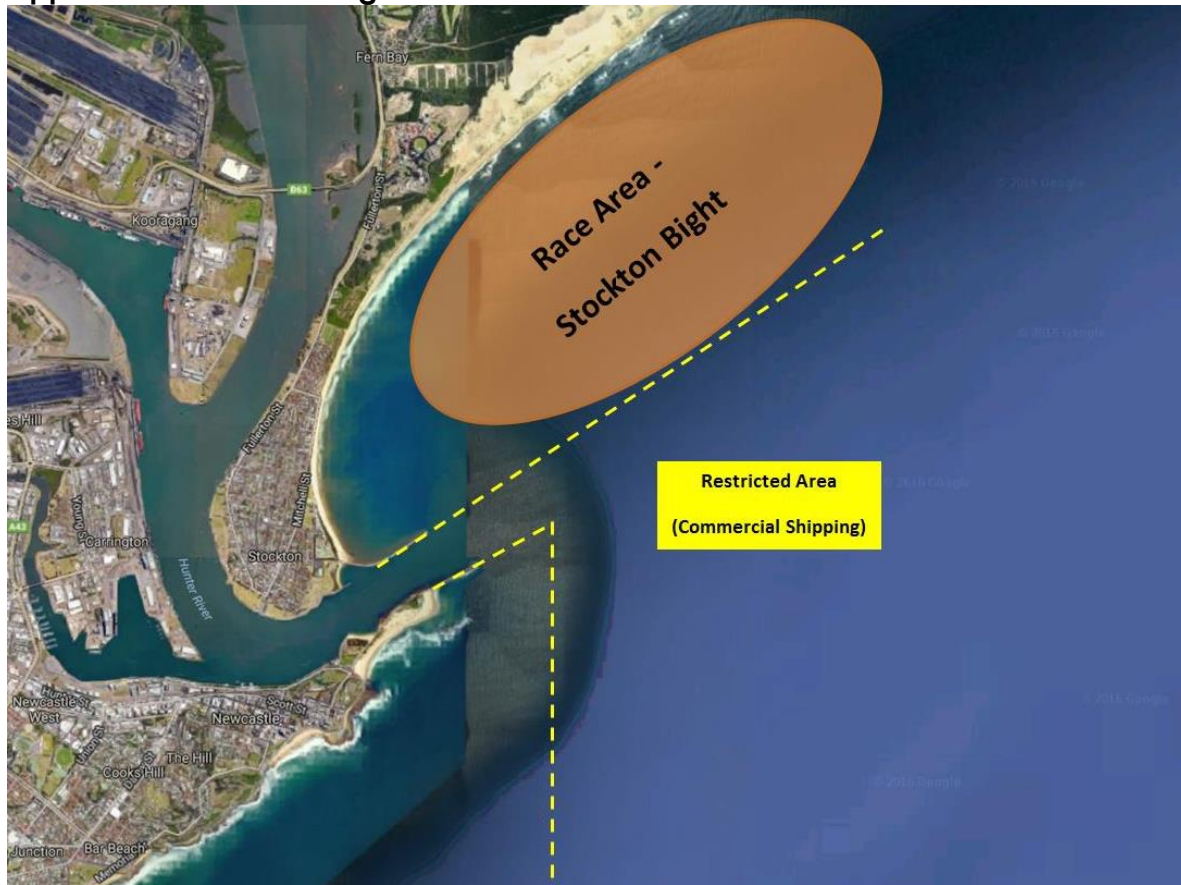
## 15 PROTESTS, ARBITRATION AND REQUESTS FOR REDRESS

- 15.1 Protest Forms are available at the race office. Protests and requests for redress or reopening shall be delivered there within the appropriate time limit.
- 15.2 For each division, the protest time limit is 90 minutes after the last boat has finished the last race of the day or the race committee signals no more racing today, whichever is later.
- 15.3 Notices will be posted no later than 30 minutes after the protest time limit to inform competitors of hearings in which they are parties or named as witnesses and where the hearings will be held.
- 15.4 An Arbitration Hearing may be called as per RRS Appendix T.
- 15.5 On the last scheduled day of racing a request for redress based on a protest committee decision shall be delivered no later than 30 minutes after the decision was posted. This changes RRS 62.2.



## APPENDIX A – OFFSHORE WINDWARD/LEEWARD RACING & STARTING AREAS

### Approximate Stockton Bight Race Area:



### Approximate South of Nobbys Lighthouse Race Area:

