



Welcome to the 2021 SailFest Newcastle Regatta hosted by Newcastle Cruising Yacht Club.

SailFest showcases sailing on the National Stage with the City of Newcastle backdrop providing a spectacular racecourse to put on display.

Racing offshore, we welcome the City of Newcastle's TP52 Gold Cup, as well as the IRC & PHS racing fleets.

A Passage race on Saturday and three windward/leeward races on Sunday will make up the SailFest regatta.

The offshore component of the SailFest Newcastle Regatta will include IRC, PHS and the TP52 Gold Cup.

A family friendly event, SailFest also engages NCYC's Sailing Academy – offering 'Try Sailing' experiences throughout the weekend.

See more –

<https://sailfest.com.au/>



SAILING INSTRUCTIONS

SAILFEST NEWCASTLE REGATTA

10TH & 11TH APRIL 2021

1 RULES

- 1.1 The event shall be governed by the rules as defined in the Racing Rules of Sailing (RRS), and the Special Regulations of Australian Sailing (AS).
- 1.2 Yachts shall comply with the 2017-2021 Australian Sailing Special Regulations Category 4, or NCYC's Category 7 PLUS.
- 1.3 Yachts sailing in IRC Division(s) shall comply with the current IRC Rules Parts A, B and C.
- 1.4 RRS 52 is amended to permit powered winches for boats over 14m LOA.
- 1.5 Boats not racing in IRC shall request permission from the Race Committee to use movable and/ or variable ballast for the purpose of increasing stability. Any such request must be accompanied by full details of the system involved, and any such system will be considered in establishing the yacht's handicap. Stored power may be used for the operation of moveable ballast systems. RRS 51 and 52 are modified to the extent of this paragraph.

2 RACE CONDITIONS

- 2.1 Newcastle Harbour is a very busy commercial port. A motor may be used by a yacht when racing to keep out of the way of commercial shipping (i.e. move out of the channel when a ship is approaching). RRS 42.3(i) allows propulsion using an engine, provided the boat does not gain significant advantage in the race.
- 2.2 All competitors will have engines running when within the Harbour and when within 500m to seaward of the entrance during departure and arrival. A boat that cannot manoeuvre safely, and is in danger of hindering any commercial shipping, shall only use her engine FOR PROPULSION to clear such shipping. This changes RRS 42. Competitors are reminded that a restricted navigation zone exists on approach to and within Newcastle Harbour (refer to Chart AUS207)
- 2.3 If when racing, a competitor receives a "5 horn blast" from commercial shipping (meaning "I am in doubt about your action taken to avoid a collision"), the offending boat may be disqualified from that race without a hearing. This changes RRS 35 and Appendix A5.
- 2.4 The following diagram illustrates the distances that vessels must keep clear of commercial shipping.



3 NOTICES TO COMPETITORS

- 3.1 Notices to competitors will be posted in the Regatta Office located in the Trophy Room on the ground floor of the NCYC Clubhouse.
- 3.2 The event webpage may duplicate notices to competitors and can be found online: <https://sailfest.com.au/>
- 3.3 The race frequency shall be VHF Ch 77. This channel may be used by the race committee to communicate with competitors and/or broadcast general information throughout the event.
- 3.4 The Race Committee may broadcast course, bearing and distance information followed by a countdown over the VHF race frequency at any time.
- 3.5 No later than the warning signal, the race committee will signal the course number by displaying a numeral pennant from the Race Committee Vessel. An approximate compass bearing of the first leg may also be displayed on a numeral board near the transom of the start boat.

4 CHANGES TO SAILING INSTRUCTIONS

- 4.1 Any change to the sailing instructions will be posted before 0800 hrs on the day it will take effect, except that any change to the schedule of races will be posted by 1800 hrs on the day before it will take effect.

5 SIGNALS MADE ASHORE

- 5.1 Signals made ashore will be displayed from the event flag pole. The event flag pole will be on the Floating Shed on F-arm of the marina.
- 5.2 When flag AP is displayed ashore, '1 minute' is replaced with 'not less than 60 minutes' in the RRS Race Signals.

6 CLASS FLAGS

- 6.1 Class Flags will be as follows:
 TP52 Division class flag shall be code flag Tango
 Division 1 class flag shall be code flag Echo
 Division 2 class flag shall be code flag Foxtrot

7 SCHEDULE OF EVENTS

- 7.1 *The following schedule is indicative only and may be varied at any time:*

Date	Time	Event	Location
Saturday, 10th April 2021	0900 hrs	Registration / Regatta Office Opens	NCYC
	1030 hrs	Competitors Briefing	
	1225 hrs	First Warning Signal Passage Race	Offshore (Harbour Start)
	ASAP After Racing	Sailors BBQ & Happy hour. Cartons may be delivered to your boat.	NCYC & aboard boats
Sunday, 11th April 2021	0800 hrs	Registration / Regatta Office Opens	NCYC
	1025 hrs	First Warning Signal x3 windward/leeward races	Offshore (Offshore Starts)
	ASAP After Racing	<i>Prizegiving Ceremony</i>	NCYC

**The OA may make changes to this schedule at any time.*

- 7.2 On the last scheduled day of racing, no warning signal shall be displayed after 1500 hrs.

8 WINDWARD/LEEWARD COURSES

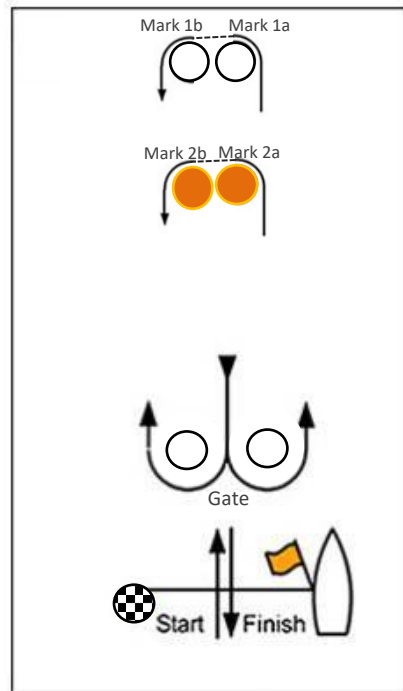
8.1 All rounding marks are to be rounded to Port.

8.2 If a gate mark is missing, the remaining mark shall be rounded to Port.

8.3 *Windward / Leeward Courses are as follows:*

Course Number	Division	Course
1 (W/L)	TP52	Start – 1a – 1b – Finish
	Division 1	Start – 1a – 1b – Finish
	Division 2	Start – 2a – 2b – Finish
2 (W/L)	TP52	Start – 1a – 1b – Gate – 1a – 1b – Finish
	Division 1	Start – 2a – 2b – Gate – 2a – 2b – Finish
	Division 2	Start – 2a – 2b – Finish
3 (W/L)	TP52	Start – 1a – 1b – Gate – 1a – 1b – Gate – 1a – 1b – Finish
	Division 1	Start – 2a – 2b – Gate – 2a – 2b – Gate – 2a – 2b – Finish
	Division 2	Start – 2a – 2b – Gate – 2a – 2b – Finish

8.4 *Windward/Leeward Course Diagram:*



8.5 *Windward/Leeward mark descriptions:*

Mark	Description
Start/Finish	Black & White checkered buoy
Mark 1a & 1b	White buoy
Mark 21 & 2b	Orange buoy
Gate	White buoy

9 PASSAGE COURSES

9.1 *Passage Courses will be as follows:*

Course No. 1		Distance
TP52	Harbour Start – Redhead Mark (P) – Mark D (P) – Redhead Mark (P) – Mark B (S) – Harbour Finish	25 NM
Div 1	Harbour Start – Glenrock Mark (P) – Mark D (P) – Glenrock Mark (P) – Mark B (S) – Harbour Finish	21 NM
Div 2	Harbour Start – Glenrock Mark (P) – Mark D (P) – Mark B (S) – Harbour Finish	15.5 NM

Course No. 2		Distance
TP52	Harbour Start – Glenrock Mark (P) – Mark D (P) – Mark B (P) – Mark D (P) – Mark B (P) – Mark D (P) – Harbour Finish	24 NM
Div 1	Harbour Start – Mark B (P) – Mark D (P) – Mark B (P) – Mark D (P) – Harbour Finish	14.5 NM
Div 2	Harbour Start – Mark B (P) – Mark D (P) – Harbour Finish	10 NM

Course No. 3		Distance
TP52	Harbour Start – Glenrock Mark (P) – Mark D (P) – Mark A (P) – Glenrock Mark (P) – Mark D (P) – Mark A (P) – Glenrock Mark (P) – Harbour Finish	30 NM
Div 1	Harbour Start – Glenrock Mark (P) – Mark D (P) – Mark A (P) – Glenrock Mark (P) – Harbour Finish	21 NM
Div 2	Harbour Start – Glenrock Mark (P) – Mark D (P) – Harbour Finish	13 NM

9.2 *Passage Race Course Diagram:*



9.3 *Passage mark descriptions are as follows:*

Name	Position	Description
Mark A	32° 55.9 S, 151° 48.4 E	Yellow
Mark B	32° 57.0 S, 151° 46.4 E	Yellow
Mark D	32° 57.7 S, 151° 48.8 E	Yellow
Glenrock Mark	32° 58.6 S, 151° 45.0 E	Yellow
Redhead Mark	33° 00.8 S, 151° 44.7 E	Yellow

10 THE START

- 10.1 Races will be started using RRS 26.
- 10.2 Entrants not starting within 4 minutes of their Division start time may be scored DNS.
- 10.3 For windward/leeward courses, the starting line will be between a staff displaying an orange flag on the race committee vessel and the course side of the starting mark.
- 10.4 For passage races, the starting line will be between a staff displaying an orange flag on the race committee vessel and the course side of the Starboard Lateral Mark No. 5 (in the vicinity of Stockton Ferry Wharf).

11 CHANGE OF THE NEXT LEG OF THE COURSE

- 11.1 To change the next leg of the course, the race committee will move the original mark/s (or move the finishing line).

12 THE FINISH

- 12.1 For windward/leeward races, the finishing line will be between a staff displaying a blue flag on the race committee vessel and the course side of the finishing mark.
- 12.2 For passage races, the finishing line will be a line between Starboard Lateral Mark No. 5 (in the vicinity of Stockton Ferry Wharf) a staff displaying a blue flag on the race committee vessel (in the vicinity of Queens Wharf).

13 TIME LIMITS

- 13.1 *Time Limits are as follows:*

Race Description	Limit Type	Time Limit
Windward/Leeward race	Race Time Limit	90 minutes
	Finishing Window	30 minutes
Passage Race	Race Time Limit	6 hours
	Finishing Window	2 hours

- 13.2 The *Race Time Limit* is defined as the amount of time allowed for the first boat to finish the race.
- 13.3 The *Finishing Window* is defined as the amount of time a boat has to Finish after the first finisher in her division.
- 13.4 Boats still racing when her time limit expires will be scored points equal to the number of boats finishing within the time limit plus 30% of the number of starters rounded to the nearest whole number, but no more points than the number of starters. Such boats will be scored Time Limit Expired (TLE). This changes RRS 35, A4.2 and A5.

14 SCORING

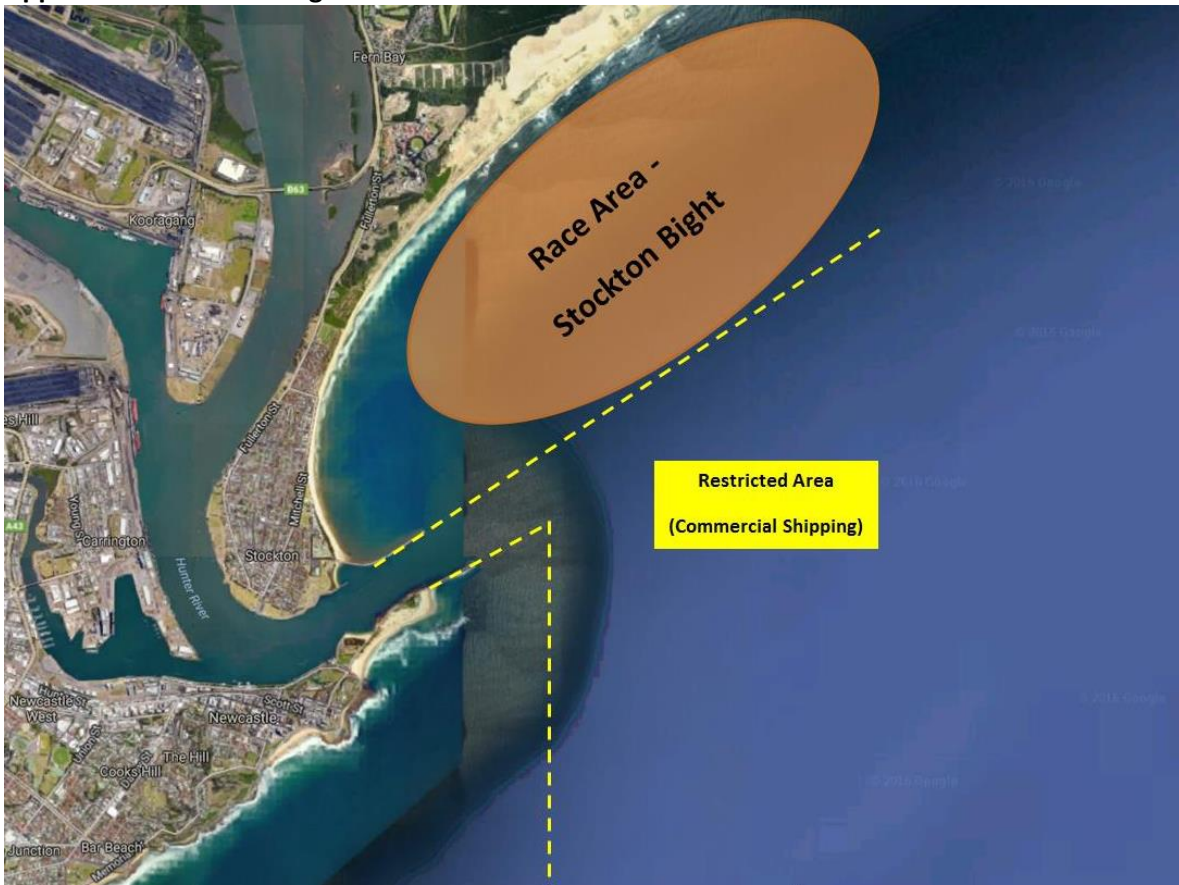
- 14.1 The Scoring System will be the Low Points System, RRS Appendix A5.2.
- 14.2 The minimum number of races to constitute a series shall be 1.
- 14.3 No drops will apply. This changes RRS Appendix A.

15 PROTESTS, ARBITRATION AND REQUESTS FOR REDRESS

- 15.1 Protest Forms are available at the race office. Protests and requests for redress or reopening shall be delivered there within the appropriate time limit.
- 15.2 For each division, the protest time limit is 90 minutes after the last boat has finished the last race of the day or the race committee signals no more racing today, whichever is later.
- 15.3 Notices will be posted no later than 30 minutes after the protest time limit to inform competitors of hearings in which they are parties or named as witnesses and where the hearings will be held.
- 15.4 An Arbitration Hearing may be called as per RRS Appendix T.
- 15.5 On the last scheduled day of racing a request for redress based on a protest committee decision shall be delivered no later than 30 minutes after the decision was posted. This changes RRS 62.2.

APPENDIX A – OFFSHORE WINDWARD/LEEWARD RACING & STARTING AREAS

Approximate Stockton Bight Race Area:



Approximate South of Nobbys Lighthouse Race Area:

